



## PC/104 Plus Board Powered by Intel Atom Processor



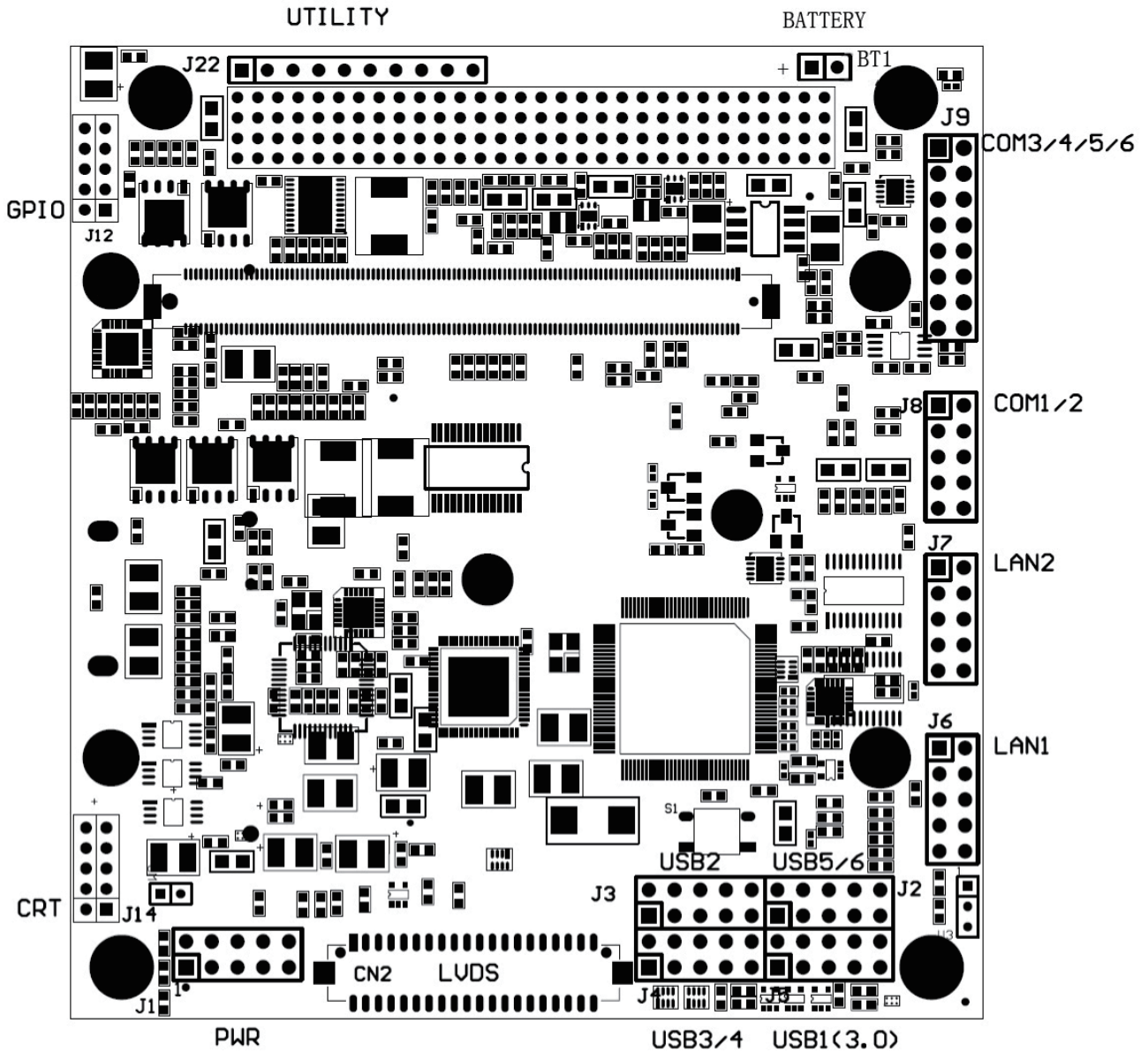
### Description:

EMB-I3845HS-2N4/EMB-I1900HS-2N4 is powered by Intel Atom E3845/J1900 processor, and is based on PC/104 plus bus, which is designed with full consideration of application environment and comprehensive measures, for operate safely, stably and efficiently in a variety of application environments.

### Specification:

<b>CPU</b>	Intel Atom E3845/J1900 4 Cores 1.91/2.00GHz
<b>BUS</b>	PC/104-Plus(Optional)
<b>System Memory</b>	DDR3-1333 4GB OnBoard
<b>Ethernet</b>	2*GbE LAN
<b>Storage</b>	1*mSATA+1*SATA
<b>Expansion</b>	1*miniPCIe
<b>USB</b>	1*USB3.0+5*USB2.0
<b>Display Interface</b>	1*VGA,1*HDMI(Optional)
<b>LVDS</b>	1*24bit Dualchannel
<b>COM</b>	4*COM(RS232/RS485/RS422/TTL Optional)(6*COM Optional)
<b>GPIO</b>	4*GPI+4*GIO
<b>Power Requirement</b>	+12V±5%,1.5A
<b>Operating Temperature</b>	-20°C~75°C(-40~+85°C Optional)
<b>Operating Humidity</b>	5~95%
<b>Storage Temperature</b>	-55~+85°C
<b>Size</b>	90 x 96mm

Interface Specification:



As a board level and system level designer and manufacturer, Polyhex, with 9 years' experience, always delivers best-in-class embedded computing solutions based on both ARM and X86 architecture, including hardware customization and software debugging etc. Partnered with silicon vendors like Intel, NXP, ST, Rockchip, Allwinners and so on, we have earned trust from clients worldwide in over 30 countries. Polyhex is also certified with ISO9001 and ISO13485 for the self-owned manufacture facility.

